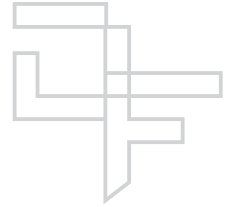


Faronics

**DEEPFREEZE™**

ABSOLUTE Workstation Integrity



## Deep Freeze Console Customizer

### TECHNICAL WHITEPAPER

Last modified: October 9, 2007

### Faronics

Toll Free Tel: 800-943-6422

Toll Free Fax: 800-943-6488

International Tel: +1 604-637-3333

International Fax: +1 604-637-8188

[www.faronics.com](http://www.faronics.com)

©1999-2007 Faronics Corporation. All rights reserved.  
Deep Freeze, Anti-Executable, and WINSelect are trademarks  
and/or registered trademarks of Faronics Corporation.  
All other company and product names are trademarks of their respective owners.

## Introduction

This document details the process of using the Deep Freeze Enterprise *Console Customizer* to create an Enterprise Console with limited features.

## Requirements:

Deep Freeze Enterprise 6.30.220.1871 or later.

## Deep Freeze Console Customizer

The Console Customizer consists of three files (*DF6ConsoleCustomizer.exe*, *customcommands.xml*, and *ConsoleCustomizerRes.dll*). All three files must be in the same root directory in order to function.

The Console Customizer lets you load an existing Console, specify which features and commands you want to be available in that Console, and save the result as a new Console that can be distributed in your organization as you see fit.

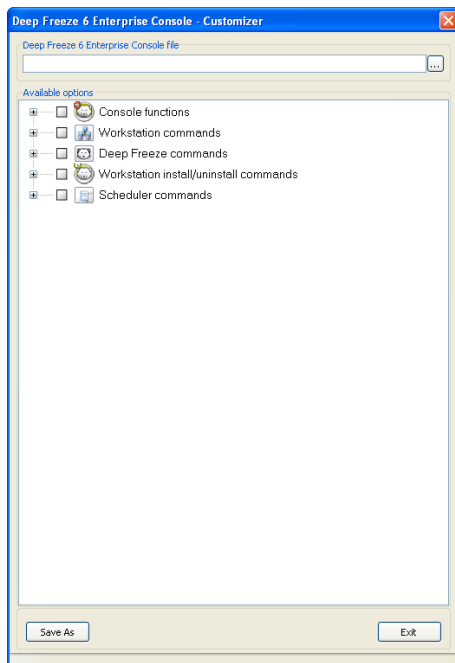
The available settings are grouped into categories (*Console functions*, *Workstation commands*, *Deep Freeze commands*, *Workstation install/uninstall commands*, and *Scheduler commands*). Click on the *plus (+)* icon to the far left of each category to disclose the full list of settings available in that category.


Check or uncheck individual settings as required. Alternatively, check or uncheck entire categories at once. Settings that are unchecked will not be available in the new Console you create.

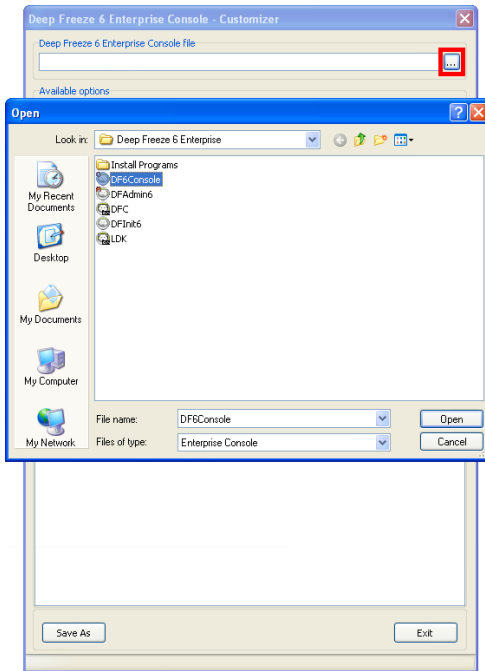
## Teacher Console Example

In this example, we will create a limited Console suitable for distribution to a teacher or computer lab instructor. We are working under the assumption that we want the teacher to be able to restart machines, lock the keyboard and mouse on demand, and send messages to the students. However, we do not want the teacher to be able to boot the machines into a Thawed state, uninstall Deep Freeze, or perform other IT-exclusive tasks.

Launch the Console Customizer by double-clicking *DF6ConsoleCustomizer.exe*:

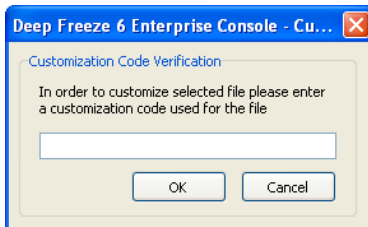


Click the ellipsis button  to load a standard *Open File* dialog:



Browse to the location of an existing Enterprise Console file (the default location is *C:\Program Files\Faronics\Deep Freeze 6 Enterprise\DFC6Console.exe*), select the file, and click *Open*.

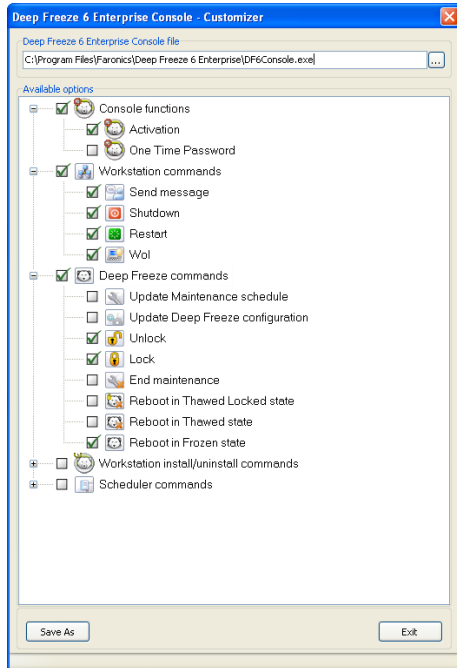
As a security precaution, you will be prompted to enter the Customization Code of the Console you are loading:



Enter the Customization Code and click *OK* to continue. You will not be able to continue unless the Customization Code matches.

The Console Customizer will now display the options that are currently selected for the Console you loaded. If you loaded an unmodified Console, all settings will be checked.

To create a limited teacher Console, we will enter the settings as shown below:



We will leave *Console functions > Activation* checked. This will ensure that if the new Console is moved to a different computer, a One Time Password will need to be entered on the computer the new Console is moved to. If this security precaution is not a concern in your environment, leave this option unchecked.

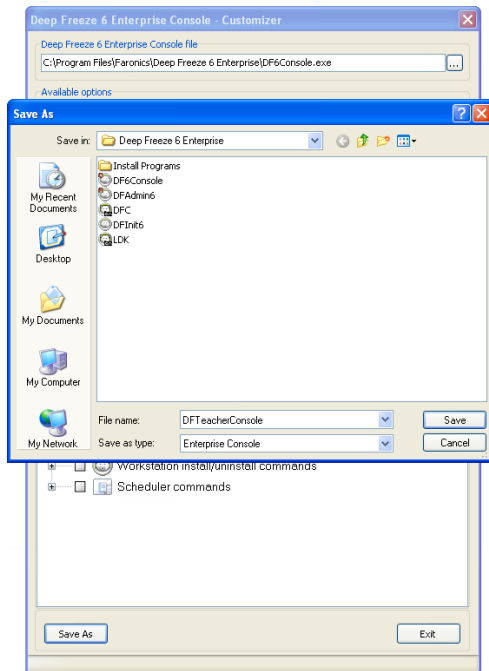
*Console functions > One Time Password* is unchecked because we do not want a teacher to be able to Thaw a machine under any circumstances.

We will leave all options under *Workstation commands* checked because we want a teacher to be able to send messages to students, and to shutdown, restart, and wake computers as required.

We will only leave three options under *Deep Freeze commands* checked: *Unlock*, *Lock*, and *Reboot in Frozen state*. This will allow a teacher to lock (and unlock) the keyboard and mouse on student computers as required, as well as to reboot computers Frozen (just in case a computer is ever accidentally left Thawed by IT staff). Leaving all other options unchecked will ensure a teacher is unable to permanently modify a computer.

Finally, we will uncheck all *Workstation install/uninstall commands* and all *Scheduler commands* because we don't want our teacher to use any of these options.

Once all options have been selected, click *Save As* to save a new Console. A standard *Save As* dialog will open:



Browse to the location where you wish to save the new Enterprise Console file (the default location is *C:\Program Files\Faronics\Deep Freeze 6 Enterprise*), enter a file name (in our example we will use *DFTeacherConsole*), and click *Save*.

When the new Console file is launched, the options that were not selected in the Console Customizer will not be displayed at all (they will not be simply grayed-out).