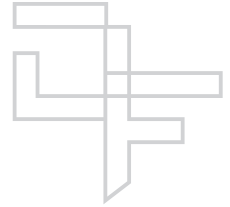


Faronics

DEEPFREEZE™

ABSOLUTE Workstation Integrity



Deep Freeze - Windows XP Service Pack 2

TECHNICAL WHITEPAPER

Last modified: June 13, 2005

Faronics

Toll Free Tel: 800-943-6422

Toll Free Fax: 800-943-6488

International Tel: +1 604-637-3333

International Fax: +1 604-637-8188

www.faronics.com

©1999-2006 Faronics Corporation. All rights reserved.
Deep Freeze, Anti-Executable, and WINSelect are trademarks
and/or registered trademarks of Faronics Corporation.
All other company and product names are trademarks of their respective owners.

Introduction

Deep Freeze Standard, Professional, and Enterprise are completely compatible with the Microsoft Windows XP Service Pack 2 that was released on August 6th, 2004.

Windows XP Service Pack 2 is available at:

<http://www.microsoft.com/downloads/details.aspx?FamilyId=049C9DBE-3B8E-4F30-8245-9E368D3CDB5A&displaylang=en>

This white paper is designed to provide additional technical information required to configure XP's firewall for use with the Deep Freeze Enterprise Console.

XP Service Pack 2's Firewall and Deep Freeze Enterprise

Deep Freeze uses the following different colored icons to represent the functions of its components.



The Enterprise Console application, used to centrally deploy, monitor, manage, and maintain Deep Freeze workstations.




A pre-configured workstation installation program file, used to install Deep Freeze on workstations.



A pre-configured Workstation Seed, used to Target Install Deep Freeze from the Enterprise Console.

The Workstation Seed  and the Full Workstation Installation program  both run with system level privileges and are not blocked by XP Service Pack 2's firewall by default.

Both components function normally unless *Don't allow exceptions* has been checked in the Windows Firewall settings. Therefore, it is very important to ensure that *Don't allow exceptions* is left unchecked.

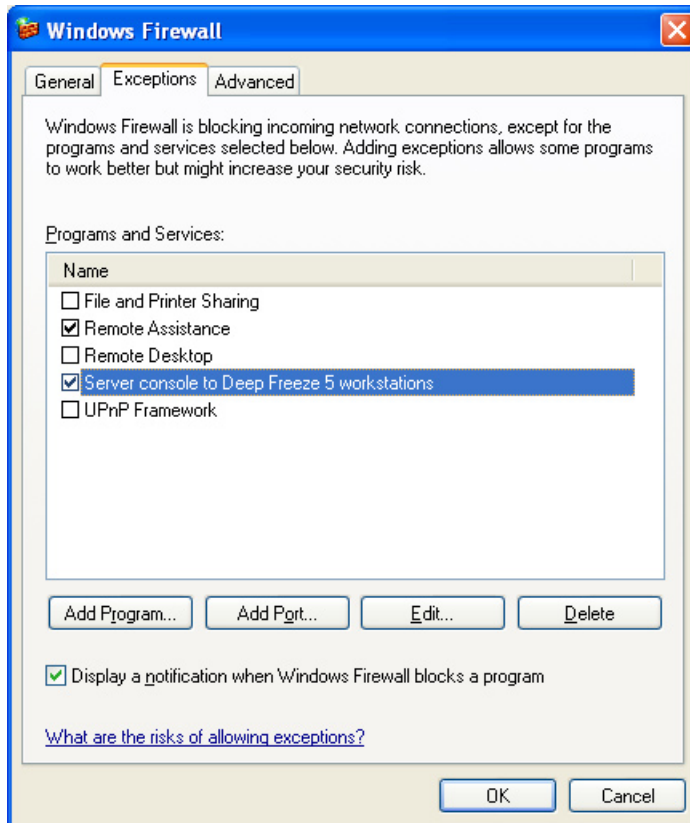
The Enterprise Console  is blocked the first time it is launched following the installation of XP Service Pack 2.

The following Windows Security Alert appears:



Click *Unblock* to allow the Enterprise Console to function as normal.

To verify that the Enterprise Console has been unblocked, see the *Exceptions* tab of the Windows Firewall settings, as shown below:



For maximum security and ongoing compatibility with the Deep Freeze Enterprise Console, go to the *General* tab of the Windows Firewall settings.

Ensure that Firewall is turned *On*, but that *Don't allow exceptions* is not checked, as shown below:

